

# CONTENTS

<b>LIST OF ACRONYMS</b>	<b>ii</b>
<b>I. OVERVIEW</b>	<b>1</b>
General Information	1
SPN21 Education Structure	2
<b>II. EDUCATION STATISTICS [2010 - 2014]</b>	<b>3</b>
Number of Schools, Teachers, and Students of Brunei Darussalam 2014	3
Number of Schools by Sector and Level of Education	4
Total Number of Schools	5
Number of Students by Sector and Level of Education	6
Total Number of Students	7
Number of Teachers by Sector and Level of Education	8
Total Number of Teachers	9
Pre-Primary and Primary Enrolment by Age 2014	10
Secondary Enrolment by Age 2014	10
Sixth Form Enrolment by Age 2014	10
Vocational and Technical Enrolment by Age 2014	10
Higher Education Enrolment by Age 2014	11
Number of Graduates by Institutions 2010 - 2014	11
<b>III. EDUCATION INDICATORS [2010 - 2014]</b>	<b>12</b>
Gross Enrolment Rate (GER) and Net Enrolment Rate (NER) in Pre-Primary Education	12
Gross Enrolment Rate (GER) and Net Enrolment Rate (NER) in Primary Education	13
Gross Enrolment Rate (GER) and Net Enrolment Rate (NER) in Secondary Education	14
Gross Enrolment Rate (GER) and Net Enrolment Rate (NER) in Post-Secondary Education	15
Gross Enrolment Rate (GER) and Net Enrolment Rate (NER) in Higher Education	16
Gross Intake Rate (GIR) and Net Intake Rate (NIR) in Primary Education	17
Repetition Rate in Primary Education by Grade	18
Distribution of Primary Teachers by Qualifications	19
Pupil-Teacher Ratio (PTR) by Level of Education	20
<b>IV. GLOSSARY</b>	<b>21</b>

## LIST OF ACRONYMS

MoE	- Ministry of Education
MoRA	- Ministry of Religious Affairs
MoCYS	- Ministry of Culture, Youth and Sports
PMO	- Prime Minister's Office
Private	- Schools/Institutions under private sector
DPDR	- Department of Planning, Development and Research
DEPD	- Department of Economic Planning and Development
PB	- <b>Politeknik Brunei</b>
ITB	- <b>Institut Teknologi Brunei</b>
UBD	- <b>Universiti Brunei Darussalam</b>
UNISSA	- <b>Universiti Sultan Sharif Ali</b>
KUPUSB	- <b>Kolej Universiti Perguruan U gama Seri Begawan</b>
IGS	- International Graduate Studies College
LCB	- <b>Laksamana College of Business</b>
HND	- Higher National Diploma
GER	- Gross Enrolment Rate
NER	- Net Enrolment Rate
GPI	- Gender Parity Index
NIR	- Net Intake Rate
GIR	- Gross Intake Rate
PTR	- Pupil-Teacher Ratio
MF	- Male and Female
F	- Female
M	- Male

# I Overview

## General Information

Total Population	411,900
Annual Rate of Increase	1.4
Life Expectancy at Birth	77.4
Infant Mortality Rate per 1000 live births	7.4
Literacy Rate (Total)	97.6
Literacy Rate (Male)	98.3
Literacy Rate (Female)	96.9
GDP per Capita at current prices	52,614.0*
Number of Schools	258
Number of Teachers	10896
Number of Students	116168
Teacher to Student Ratio	1:11
School to Student Ratio	1:452
School to Teacher Ratio	1:42
Number of Graduates at Higher Education (local institutions)	3433

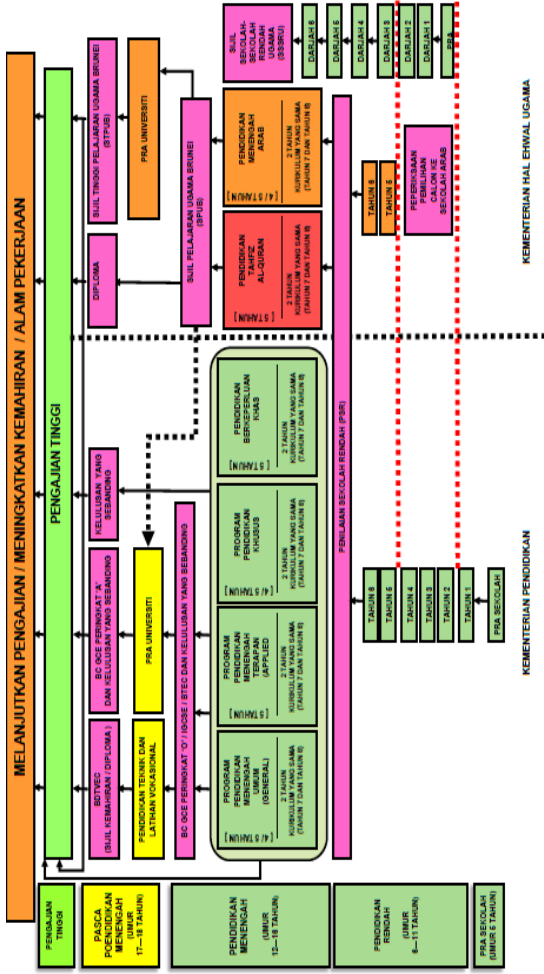
**Note:**

\* - Based on the revised and rebasing of the national accounts with basic year 2010, Department of Economic Planning and Development.

**Source:**

Department of Economic Planning and Development, Prime Minister's Office (2014).  
Department of Planning, Development and Research, Ministry of Education (2014).

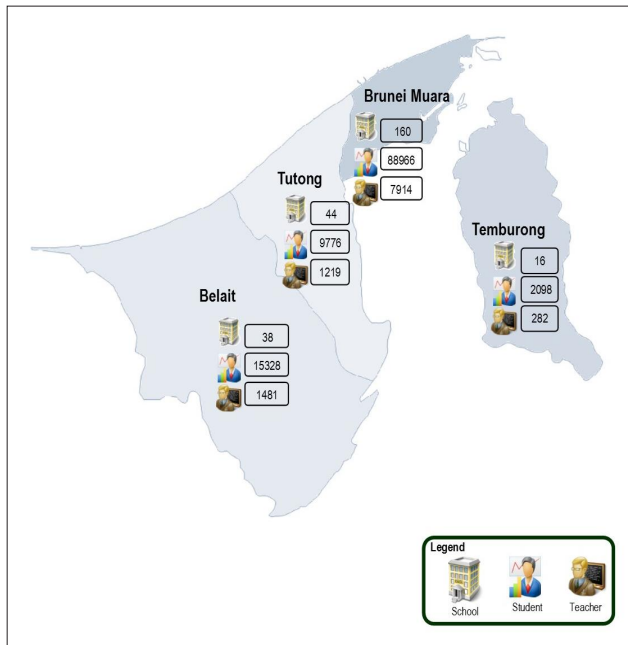
## SPN 21 Education System Structure



Source: SPN21, Ministry of Education (2013)

## II Education Statistics [2010 - 2014]

### Number of Schools, Teachers and Students in All Districts of Brunei Darussalam [2014]



Source: Education Statistics 2014, DPDR

## Number of Schools by Sector and Level of Education

Sector	Ministry	Level of Education	Year				
			2010	2011	2012	2013	2014
Government	MoE	Pre-Primary	119	119	119	120	120
		Primary					
		Secondary	30	30	31	31	32
		Sixth form	3	3	4	4	4
		Vocational Technical	7	7	7	7	7
		Higher Education	3	3	4	4	4
	MoRA	Primary	3	5	4	5	5
		Secondary	4	1	2	2	2
		Sixth Form	1	1	1	1	1
		Higher Education	1	1	1	1	1
	MoCYS	Vocational Technical	1	1	1	1	1
PMO	Vocational Technical	1	1	1	1	1	
Private	Pre-Primary	81	79	79	74	76	
	Primary						
	Secondary						
	Sixth Form						
	Vocational Technical	3	2	2	3	3	
	Higher Education	1	2	2	2	2	
<b>TOTAL</b>			<b>258</b>	<b>255</b>	<b>258</b>	<b>256</b>	<b>259</b>

Source: Brunei Darussalam Education Statistics 2010 - 2014, DPDR

### Total Number of Schools



Number of Schools		2010	2011	2012	2013	2014
Government	MoE	162	162	165	166	167
	MoRA	9	8	8	9	9
	MoCYS	1	1	1	1	1
	PMO	1	1	1	1	1
Private		85	83	83	79	81
<b>TOTAL</b>		<b>258</b>	<b>255</b>	<b>258</b>	<b>256</b>	<b>259</b>

Source: Brunei Darussalam Education Statistics 2010 - 2014, DPDR

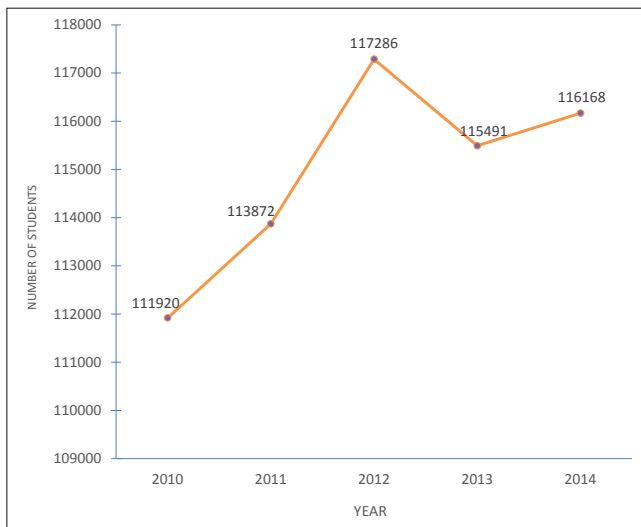
## Number of Students by Sector and Level of Education

Sector	Ministry	Level of Education	Year				
			2010	2011	2012	2013	2014
Government	MoE	Pre-Primary	3658	3434	3285	2961	3052
		Primary	27184	26753	25770	24917	23726
		Secondary	33088	33167	32704	30803	29907
		Sixth form	4814	4910	5691	5678	4723
		Vocational Technical	2328	2909	3967	4609	3409
		Higher Education	5291	5812	6940	7738	9472
	MoRA	Primary	932	990	1049	1088	1236
		Secondary	1220	1470	1599	1851	2030
		Sixth form	298	296	334	424	442
		Higher Education	530	566	648	732	820
	MoCYS	Vocational Technical	341	328	304	254	241
PMO	Vocational Technical	46	46	40	37	17	
Private	Pre-Primary	9420	9619	9810	10073	10324	
	Primary	16099	16024	15934	16085	16116	
	Secondary	5536	5697	5722	5675	5832	
	Sixth Form	370	370	382	446	453	
	Vocational Technical	683	723	1653	1793	1955	
	Higher Education	82	758	1454	327	2413	
<b>TOTAL</b>			<b>111920</b>	<b>113872</b>	<b>117286</b>	<b>115491</b>	<b>116168</b>

Source: Brunei Darussalam Education Statistics 2010 - 2014, DPDR



## Total Number of Students



Sector	Ministry	2010	2011	2012	2013	2014
Government	MoE	76363	76985	78357	76706	74289
	MoRA	2980	3322	3630	4095	4528
	MoCYS	341	328	304	254	241
	PMO	46	46	40	37	17
Private		32190	33191	34955	34399	37093
<b>TOTAL</b>		<b>111920</b>	<b>113872</b>	<b>117286</b>	<b>115491</b>	<b>116168</b>

Source: Brunei Darussalam Education Statistics 2010 - 2014, DPDR

## Number of Teachers by Sector and Level of Education

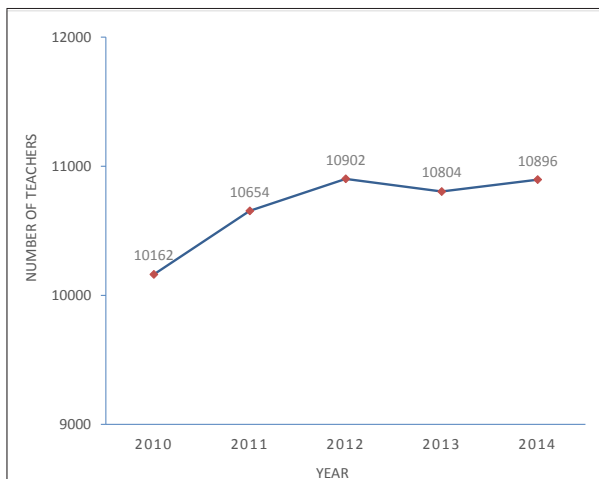
Sector	Ministry	Level of Education	Year				
			2010	2011	2012	2013	2014
Government	MoE	Pre-Primary	264	256	247	205	259
		Primary	2658	2859	2866	2885	2762
		Secondary	3142	3256	3230	3191	3324
		Sixth form	461	480	513	518	543
		Vocational Technical	463	478	464	503	527
		Higher Education	636	608	621	599	618
	MoRA	Primary	104	110	142	70	143
		Secondary	222	257	334	312	245
		Sixth form	60	58	59	136	64
		Higher Education	47	45	36	44	48
	MoCYS	Vocational Technical	14	25	53	19	23
	PMO	Vocational Technical	17	19	18	17	16
Private	Pre-Primary	402	825	716	482	527	
	Primary	1134	892	1030	1135	1099	
	Secondary	490	426	463	585	500	
	Sixth Form					26 <sup>(i)</sup>	
	Vocational Technical	39	24	58	79	91	
	Higher Education	9	36	52	24	81	
<b>TOTAL</b>			<b>10162</b>	<b>10654</b>	<b>10902</b>	<b>10804</b>	<b>10896</b>

Source: Brunei Darussalam Education Statistics 2010 - 2014, DPDR

**Note:**

(i) - Teachers teaching at both Secondary and Sixth Form levels are included under Secondary.

## Total Number of Teachers



Ministry		2010	2011	2012	2013	2014
Government	MoE	7624	7937	7941	7901	8033
	MoRA	433	470	571	562	500
	MoCYS	14	25	53	19	23
	PMO	17	19	18	17	16
Private		2074	2203	2319	2305	2324
<b>TOTAL</b>		<b>10162</b>	<b>10654</b>	<b>10902</b>	<b>10804</b>	<b>10896</b>

Source: Brunei Darussalam Education Statistics 2010 - 2014, DPDR

### Pre-Primary and Primary Enrolment by Age [2014]

Level	Gender	Age (in years)											Total
		2	3	4	5	6	7	8	9	10	11	≥ 12	
Pre-Primary	MF	136	2411	3788	5659	1341	39	2	0	0	0	0	13376
	M	67	1217	1926	2926	709	25	1	0	0	0	0	6871
	F	69	1194	1862	2733	632	14	1	0	0	0	0	6505
Primary	MF	0	0	0	583	4852	6620	7275	7015	6917	6543	1273	41078
	M	0	0	0	296	2454	3374	3823	3576	3679	3313	578	21093
	F	0	0	0	287	2398	3246	3452	3439	3238	3230	695	19985

Source: Brunei Darussalam Education Statistics 2010 - 2014, DPDR

### Secondary Enrolment by Age [2014]

Level	Gender	Age (in years)								Total
		≤ 11	12	13	14	15	16	17	≥ 18	
Secondary	MF	1712	5723	7398	7796	6776	5375	2228	761	37769
	M	812	2905	3760	4113	3620	2899	1313	500	19922
	F	900	2818	3638	3683	3156	2476	915	261	17847

Source: Brunei Darussalam Education Statistics 2010 - 2014, DPDR

### Sixth Form Enrolment by Age [2014]

Level	Gender	Age (in years)					Total
		≤ 14	15	16	17	18	
Sixth Form	MF	9	305	1334	2031	1939	5618
	M	3	128	551	824	852	2358
	F	6	177	783	1207	1087	3260

Source: Brunei Darussalam Education Statistics 2010 - 2014, DPDR

### Vocational Technical Enrolment by Age [2014]

Level	Gender	Age (in years)								Total
		17	18	19	20	21	22	≥ 23	Unknown	
Vocational Technical	MF	397	959	1131	953	684	423	1045	30	5622
	M	211	504	623	554	425	266	542	16	3141
	F	186	455	508	399	259	157	503	14	2481

Source: Brunei Darussalam Education Statistics 2010 - 2014, DPDR

## Higher Education Enrolment by Age [2014]

Level	Gender	Age (years)																	Total
		17	18	19	20	21	22	23	24	25	26	27	28	29	30 - 34	35 - 39	≥ 40	Unknown	
Higher Education	MF	95	460	1212	1559	1605	1497	1026	713	535	302	174	126	99	425	324	177	2376	<b>12705</b>
	M	51	178	474	562	605	529	427	270	194	121	65	51	40	157	106	71	1139	<b>5040</b>
	F	44	282	738	997	1000	968	599	443	341	181	109	75	59	268	218	106	1237	<b>7665</b>

Source: Brunei Darussalam Education Statistics 2010 - 2014, DPDR

## Number of Graduates by Institutions (local institutions)

Institutions	2010		2011		2012		2013		2014						
	M	F	M	F	M	F	M	F	M	F					
UBD	350	766	1116	304	729	1033	335	840	1175	298	729	1027	327	791	1118
UNISSA	0	0	0	61	88	149	57	76	133	66	82	148	40	75	115
ITB	210	174	384	178	204	382	173	195	368	195	235	430	185	231	416
PB	0	0	0	0	0	0	0	0	0	0	0	0	248	334	582
KUPUSB	59	92	151	79	111	190	67	116	183	104	171	275	73	146	219
LCB	29	31	60	26	35	61	217	232	449	123	135	258	201	226	427
IGS	59	33	92	42	45	87	60	36	96	97	86	183	273	283	556

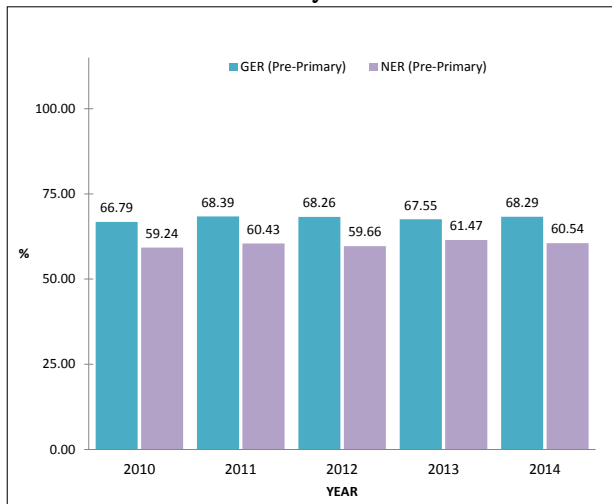
Source: Brunei Darussalam Education Statistics 2010 - 2014, DPDR

Note:-

- Pengiran Anak Puteri Rashidah Sa'adatul Bolkiah Nursing College was merged to **UBD** in the year 2009.
- **ITB** was upgraded to university level in the year 2008.
- **UNISSA** was established in the year 2007 and only had their graduates in the year 2011.
- Religious Teachers College was upgraded to **KUPUSB** in the year 2007.
- **Politeknik Brunei** started the first intake in the year 2012.

### III Education Indicators [2010 - 2014]

#### Gross Enrolment Rate (GER) and Net Enrolment Rate (NER) in Pre-Primary Education



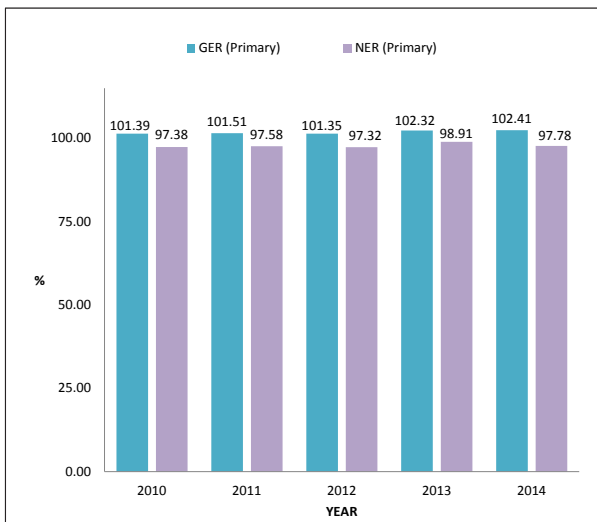
Number of:	2010	2011	2012	2013	2014
Enrolment regardless of age	13078	13053	13095	13034	13376
Enrolment age 3-5 years old	11600	11534	11446	11860	11858
Population age 3-5 years old	19581	19085	19184	19295	19586

Source:

Enrolment - Brunei Darussalam Education Statistics 2010 - 2014, DPDR

Population - Immigration and National Registration Department, 2014

## Gross Enrolment Rate (GER) and Net Enrolment Rate (NER) in Primary Education

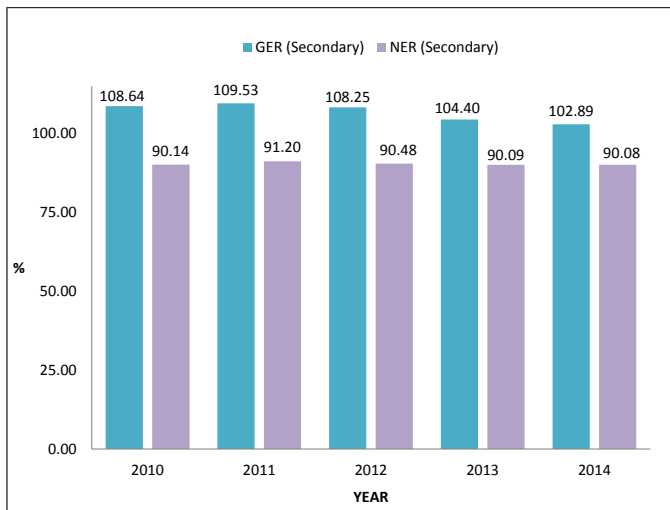


Number of:	2010	2011	2012	2013	2014
Enrolment regardless of age	44215	43767	42753	42090	41078
Enrolment age 6-11 years old	42466	42073	41052	40688	39222
Population age 6-11 years old	43609	43118	42183	41135	40111

Source:

Enrolment - Brunei Darussalam Education Statistics 2010 - 2014, DPDR  
Population - Immigration and National Registration Department, 2014

## Gross Enrolment Rate (GER) and Net Enrolment Rate (NER) in Secondary Education



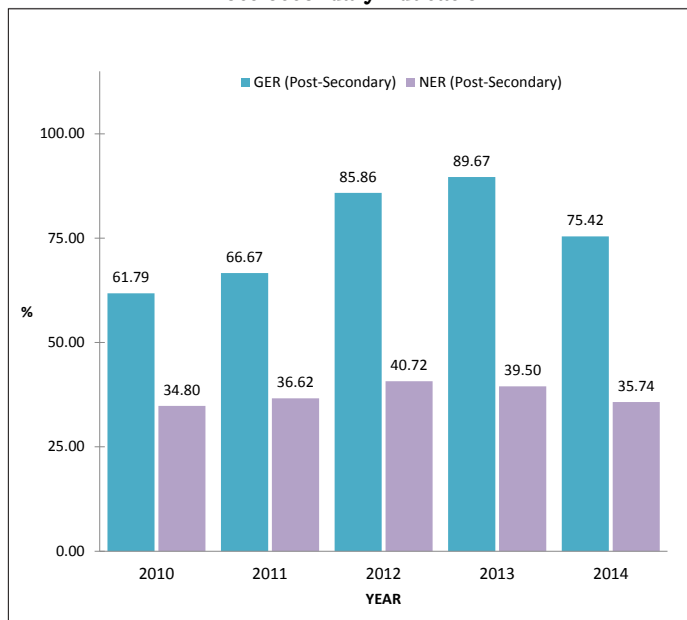
Number of:	2010	2011	2012	2013	2014
Enrolment regardless of age	39844	40334	40025	38329	37769
Enrolment age 12-16 years old	33059	33584	33454	33077	33068
Population age 12-16 years old	36676	36823	36974	36714	36708

Source:

Enrolment - Brunei Darussalam Education Statistics 2010 - 2014, DPDR  
Population - Immigration and National Registration Department, 2014



## Gross Enrolment Rate (GER) and Net Enrolment Rate (NER) in Post-Secondary Education

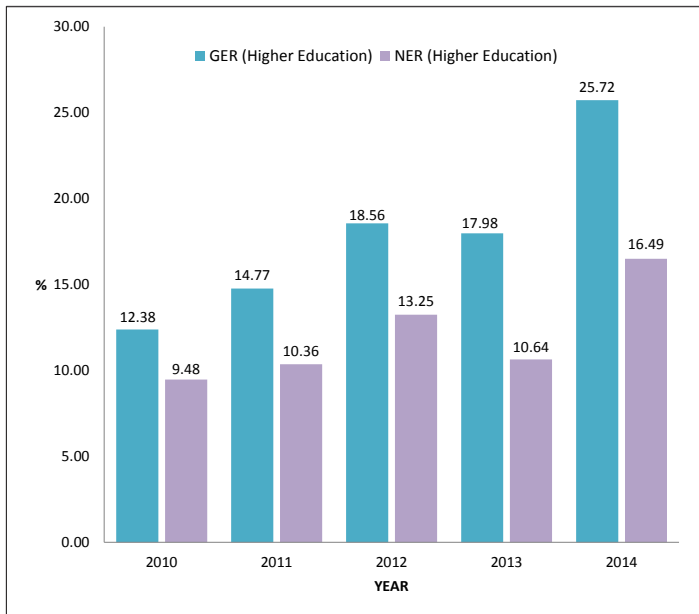


Number of:	2010	2011	2012	2013	2014
Enrolment regardless of age	8880	9582	12371	13241	11240
Enrolment age 17-18 years old	5001	5263	5868	5832	5326
Population age 17-18 years old	14372	14373	14409	14766	14903

Source:

Enrolment - Brunei Darussalam Education Statistics 2010 - 2014, DPDR  
Population - Immigration and National Registration Department, 2014

## Gross Enrolment Rate (GER) and Net Enrolment Rate (NER) in Higher Education

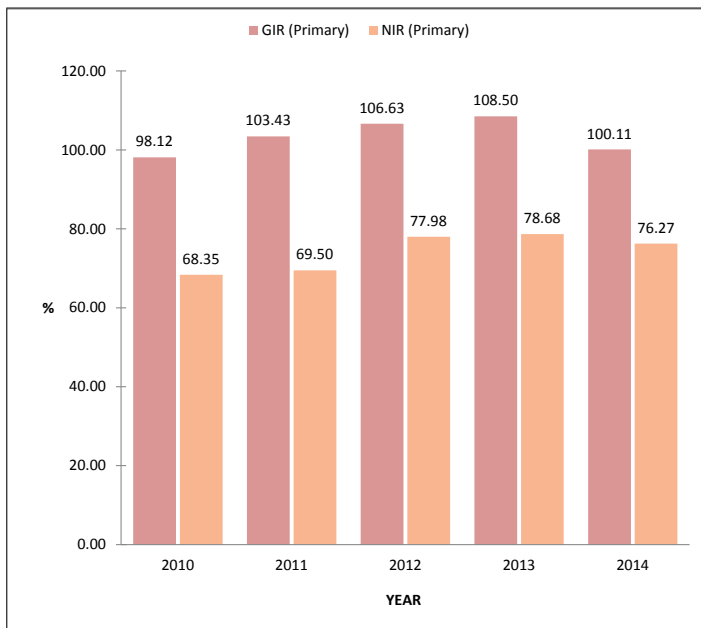


Number of:	2010	2011	2012	2013	2014
Enrolment regardless of age	5903	7136	9042	8797	12705
Enrolment age 19-25 years old	4518	5005	6454	5207	8147
Population age 19-25 years old	47683	48315	48719	48936	49394

Source:

Enrolment - Brunei Darussalam Education Statistics 2010 - 2014, DPDR  
Population - Immigration and National Registration Department, 2014

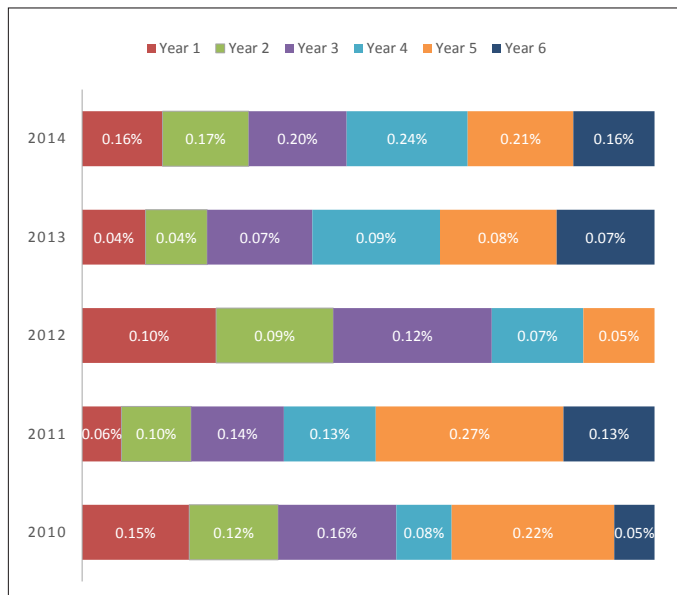
## Gross Intake Rate (GIR) and Net Intake Rate (NIR) in Primary Education



Number of:	2010	2011	2012	2013	2014
<b>New Intake Year 1</b>	6954	7091	6896	6780	6369
<b>New Intake Year 1 aged 6 years old</b>	4844	4765	5043	4917	4852
<b>Population age 6 years old</b>	7087	6856	6467	6249	6362

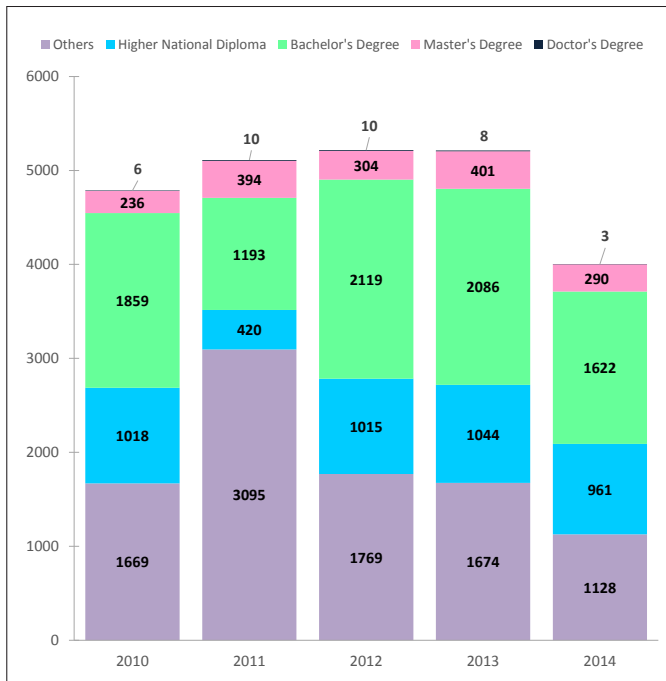
Source: Brunei Darussalam Education Statistics 2010 - 2014, DPDR  
Population – Immigration and National Registration Department, 2014

## Repetition Rate in Primary Education by Grade



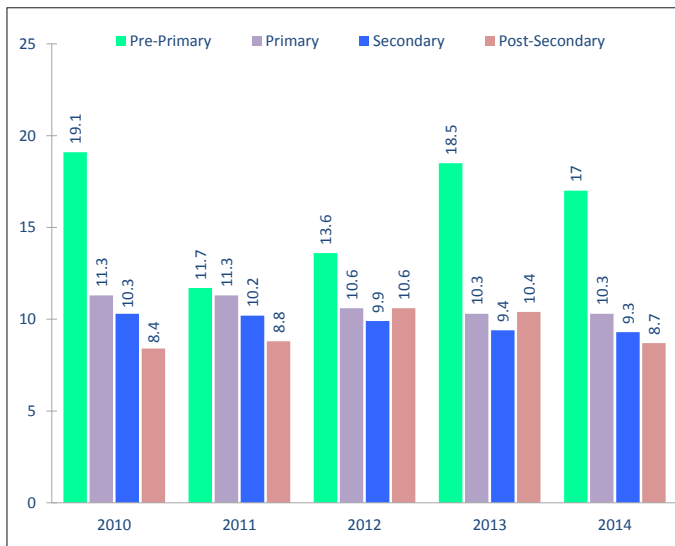
Source: Brunei Darussalam Education Statistics 2010 - 2014, DPDR

## Distribution of Primary Teachers by Qualifications



Source: Brunei Darussalam Education Statistics 2010 - 2014, DPDR

## Pupil-Teacher Ratio (PTR) by Level of Education



Education Level	2010	2011	2012	2013	2014
Pre-Primary	19.1	11.7	13.6	18.5	17.0
Primary	11.3	11.3	10.6	10.3	10.3
Secondary	10.3	10.2	9.9	9.4	9.3
Post-Secondary	8.4	8.8	10.6	10.4	8.7

Source: Brunei Darussalam Education Statistics 2010 - 2014, DPDR

## IV Glossary

### **GROSS ENROLMENT RATE (GER)**

Total enrolment in a specific level of education, regardless of age, expressed as a percentage of the eligible official school-age population corresponding to the same level of education in a given school year. Divide the number of pupils enrolled in a given level of education regardless of age by the population of the age group which officially corresponds to the given level of education, and multiply the result by 100. A high GER generally indicates a high degree of participation, whether the pupils belong to the official age group or not. A GER value approaching or exceeding 100% indicates that a country is, in principle, able to accommodate all of its school-age population, but it does not indicate the proportion already enrolled. The achievement of a GER of 100% is therefore a necessary but not sufficient condition for enrolling all eligible children in school. (Education Indicators 2009, UNESCO)

### **NET ENROLMENT RATE (NER)**

Enrolment of the official age group for a given level of education expressed as a percentage of the corresponding population. Divide the number of pupils enrolled who are of the official age group for a given level of education by the population for the same age group and multiply the result by 100. A high NER denotes a high degree of coverage for the official school-age population. If the NER is below 100%, it shows the proportion of children not enrolled at the specified level of education. (Education Indicators 2009, UNESCO)

### **GROSS INTAKE RATE (GIR)**

Total number of new entrants in the first grade of primary education, regardless of age, expressed as a percentage of the population at the official primary school-entrance age. Divide the number of new entrants in grade 1, irrespective of age, by the population of official school-entrance age, and multiply the result by 100. A high GIR indicates a high degree of access to primary education. As this calculation includes all new entrants to first grade (regardless of age), the ratio can exceed 100%, due to over-aged and under-aged children entering primary school for the first time. (Education Indicators 2009, UNESCO)

### **NET INTAKE RATE (NIR)**

New entrants in the first grade of primary education who are of the official primary school-entrance age, expressed as a percentage of the population of the same age. Divide the number of children of official primary school-entrance age who enter the first grade of primary education for the first time by the population of the same age, and multiply the result by 100. A high NIR indicates a high degree of access to primary education for the official primary school entrance age children. NIR of 100% is a necessary condition for the policy goal of universal primary education. (Education Indicators 2009, UNESCO)

**REPETITION RATE (RR)**

Proportion of pupils enrolled in a given grade at a given school year who study in the same grade in the following school year. Divide the number of repeaters in a given grade in school year  $t+1$  by the number of pupils from the same cohort enrolled in the same grade in the previous school year  $t$ . Repetition Rate ideally should approach zero percent. High repetition rate reveals problems in the internal efficiency of the educational system. When compared across grades, the patterns can indicate specific grades for which there is higher repetition, hence requiring more in depth study of causes and possible remedies. (Education Indicators 2009, UNESCO)

**PUPIL-TEACHER RATIO (PTR)**

Average number of pupils (students) per teacher at a specific level of education in a given school year. Divide the total number of pupils enrolled at the specified level of education by the number of teachers at the same level. A high teacher pupil-ratio suggests that each teacher has to be responsible for a large number of pupils. In other words, the higher the pupil/teacher ratio, the lower the relative access of pupils to teachers. It is generally assumed that a low pupil-teacher ratio signifies smaller classes, which enables the teacher to pay more attention to individual students, which may in the long run result in a better performance of the pupils. (Education Indicators 2009, UNESCO)